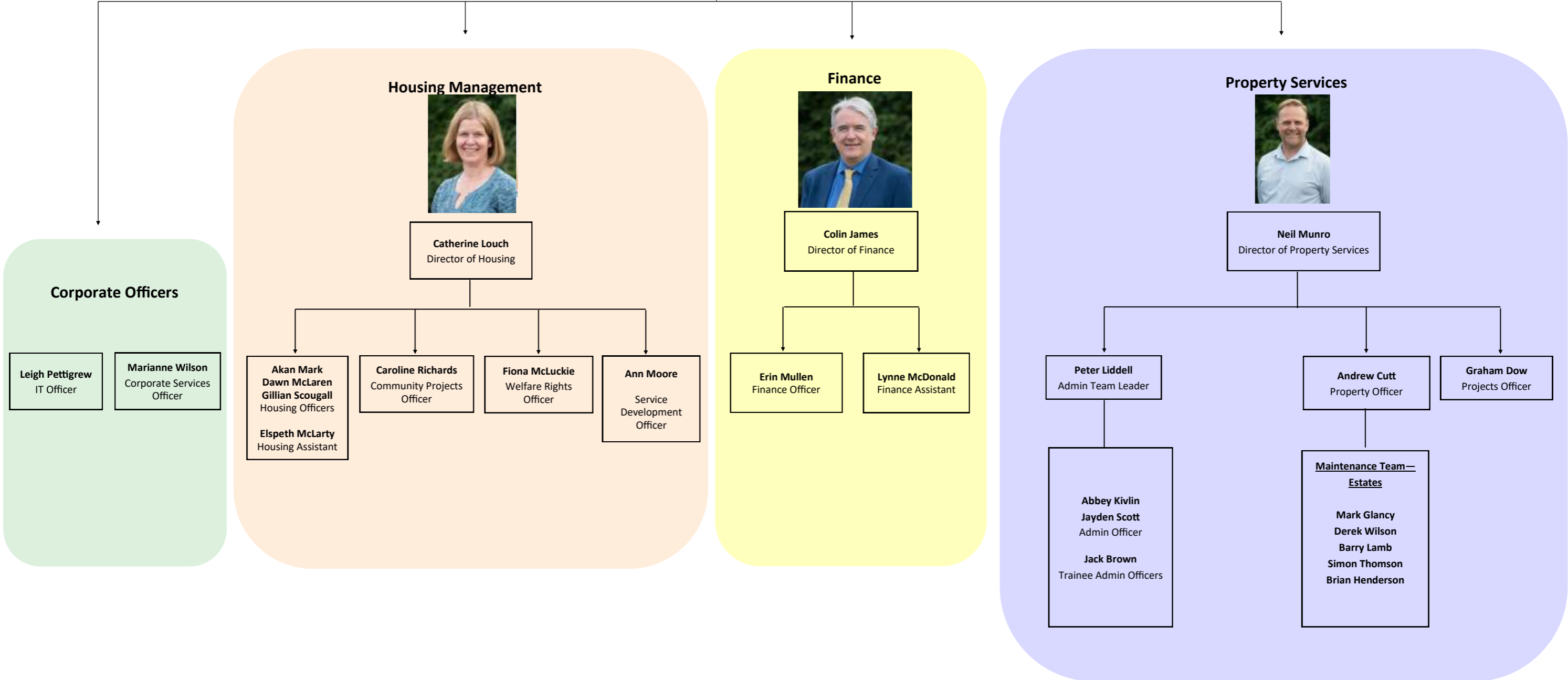


Current Staff Structure



Brendan Fowler
Chief Executive
Officer (CEO)



Corporate Officers

Leigh Pettigrew
IT Officer

Marianne Wilson
Corporate Services
Officer

Housing Management



Catherine Louch
Director of Housing

Akan Mark
Dawn McLaren
Gillian Scougall
Housing Officers

Elsbeth McLarty
Housing Assistant

Caroline Richards
Community Projects
Officer

Fiona McLuckie
Welfare Rights
Officer

Ann Moore
Service
Development
Officer

Finance



Colin James
Director of Finance

Erin Mullen
Finance Officer

Lynne McDonald
Finance Assistant

Property Services



Neil Munro
Director of Property Services

Peter Liddell
Admin Team Leader

Abbey Kivlin
Jayden Scott
Admin Officer

Jack Brown
Trainee Admin Officers

Andrew Cutt
Property Officer

**Maintenance Team—
Estates**

Mark Glancy
Derek Wilson
Barry Lamb
Simon Thomson
Brian Henderson

Graham Dow
Projects Officer